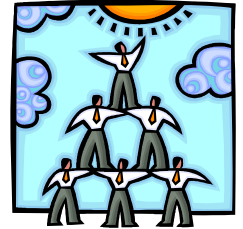




WISCONSIN PARTNERS FOR CLEAN AIR

A coalition committed to improving air quality through voluntary actions



Commuter Champion Award Nomination Guidelines

The Wisconsin Partners for Clean Air Commuter Champion Award is given out annually to the business or organization that provides their employees the most extensive commuter choices or benefits. Eligible organizations should offer a variety of commuter benefits to their employees that set them apart from others. Use the checklist below to determine your level of participation in providing employee commute options. Also, on a separate sheet, **provide a short narrative summary (1 page or less) describing your company's solutions which may include employee level of participation. Return the checklist and summary to:** Peter McMullen at peter.mcmullen@wisconsin.gov by **March 26, 2010.**

TRANSIT:

- Provide free or reduced transit fare programs (i.e. Commuter Value Pass or Transit Certificates)
- Participate in pre-tax transit payment program
- Display transit schedules and information for connecting with job site
- Sell transit tickets or passes on-site
- Other Transit Option: _____

VEHICLE:

- Promote WisDOT's Rideshare Program
- Provide internal carpool program
- Provide preferential parking for carpoolers
- Charge a parking fee
- Participate in a parking cash-out program (replaces cost of parking with salary)
- Provide or participate in a formal Vanpool Program
- Provide shuttle service to remote work sites
- Other Vehicle Option: _____

BIKE/WALK:

- Provide bike racks or storage facilities
- Provide lockers or shower facilities
- Organize walk or bike groups for commuting
- Provide walk or bike maps
- Promote or participate in Bike to Work Week
- Provide coupons or discounts on equipment for bicyclists or walkers
- Other Bike/Walk Option: _____

OTHER:

- Provide guaranty or emergency ride home (through transit agency, WisDOT, or internal)
- Provide rewards or incentives to encourage use of alternative commutes (i.e. prizes)
- Offer compressed work week, flex, or telecommute schedule
- Designated company Employee Transportation Coordinator for commuter benefits has been appointed
- Participate in a Walk-to-Work Program that assists home-buying near work site or transit locations
- Other (other) Option: _____

Company Name: _____ Contact: _____

Email: _____ Phone: _____